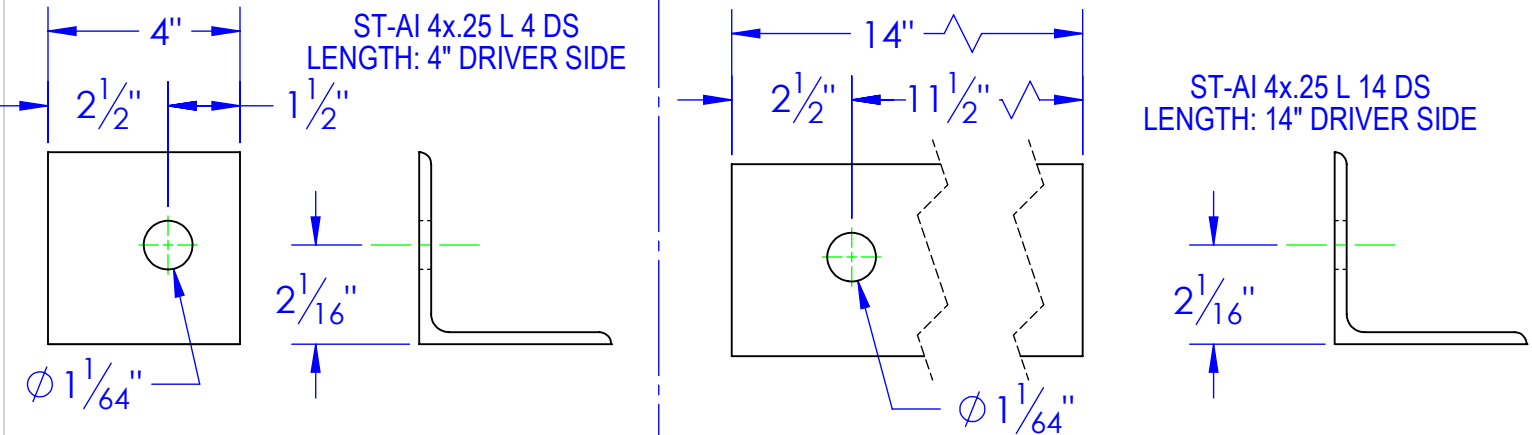
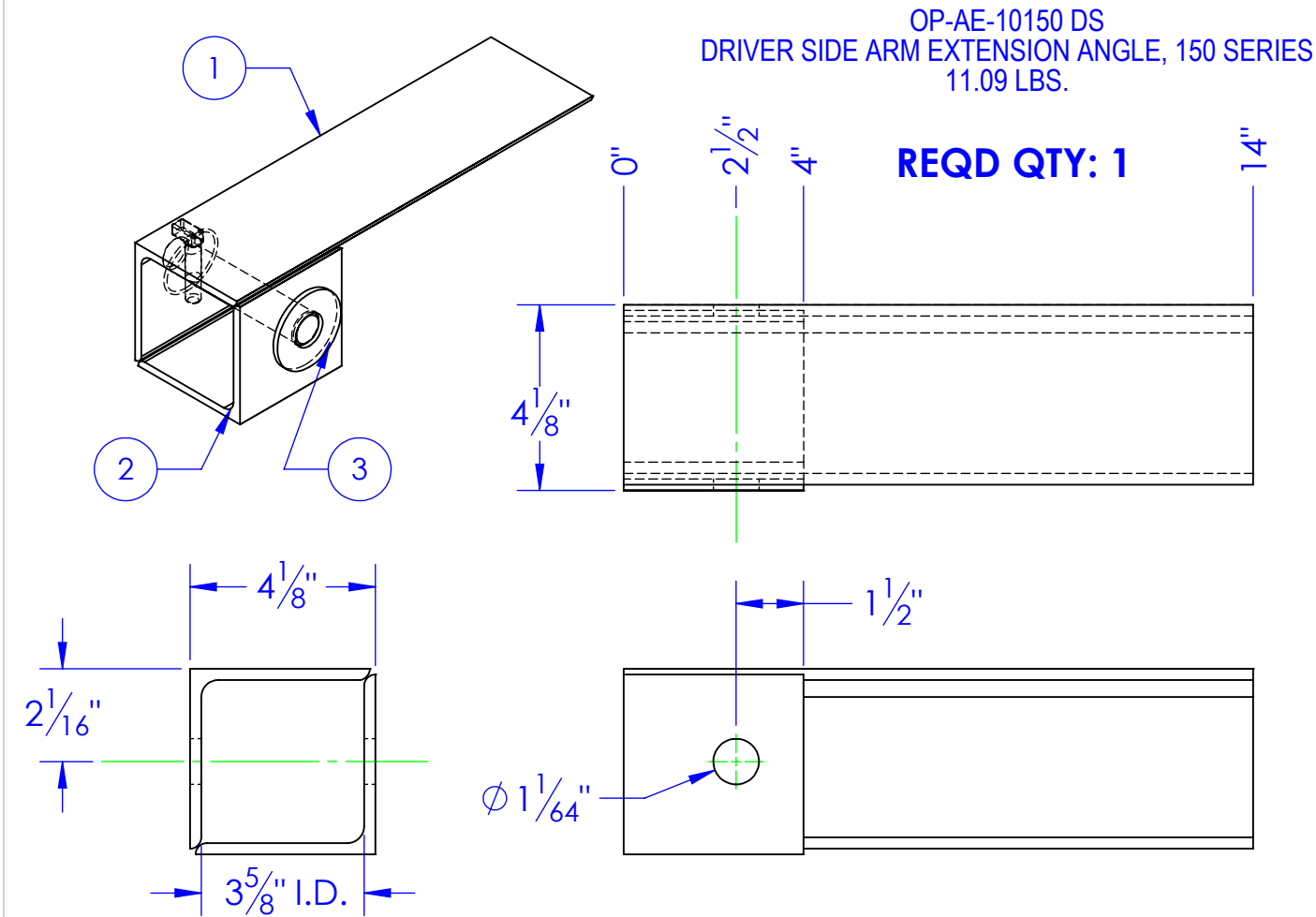
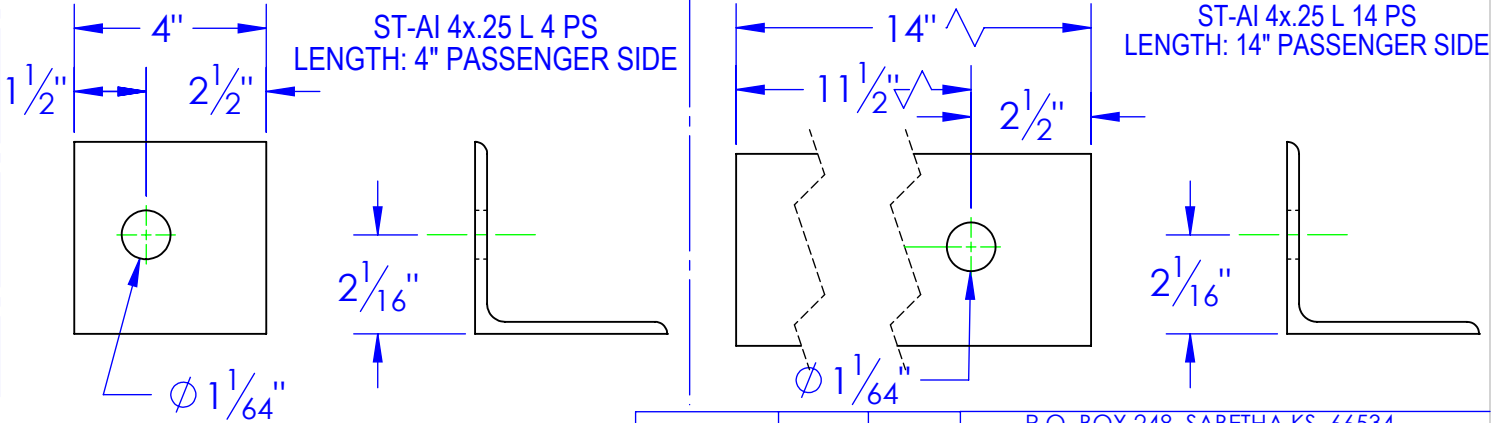
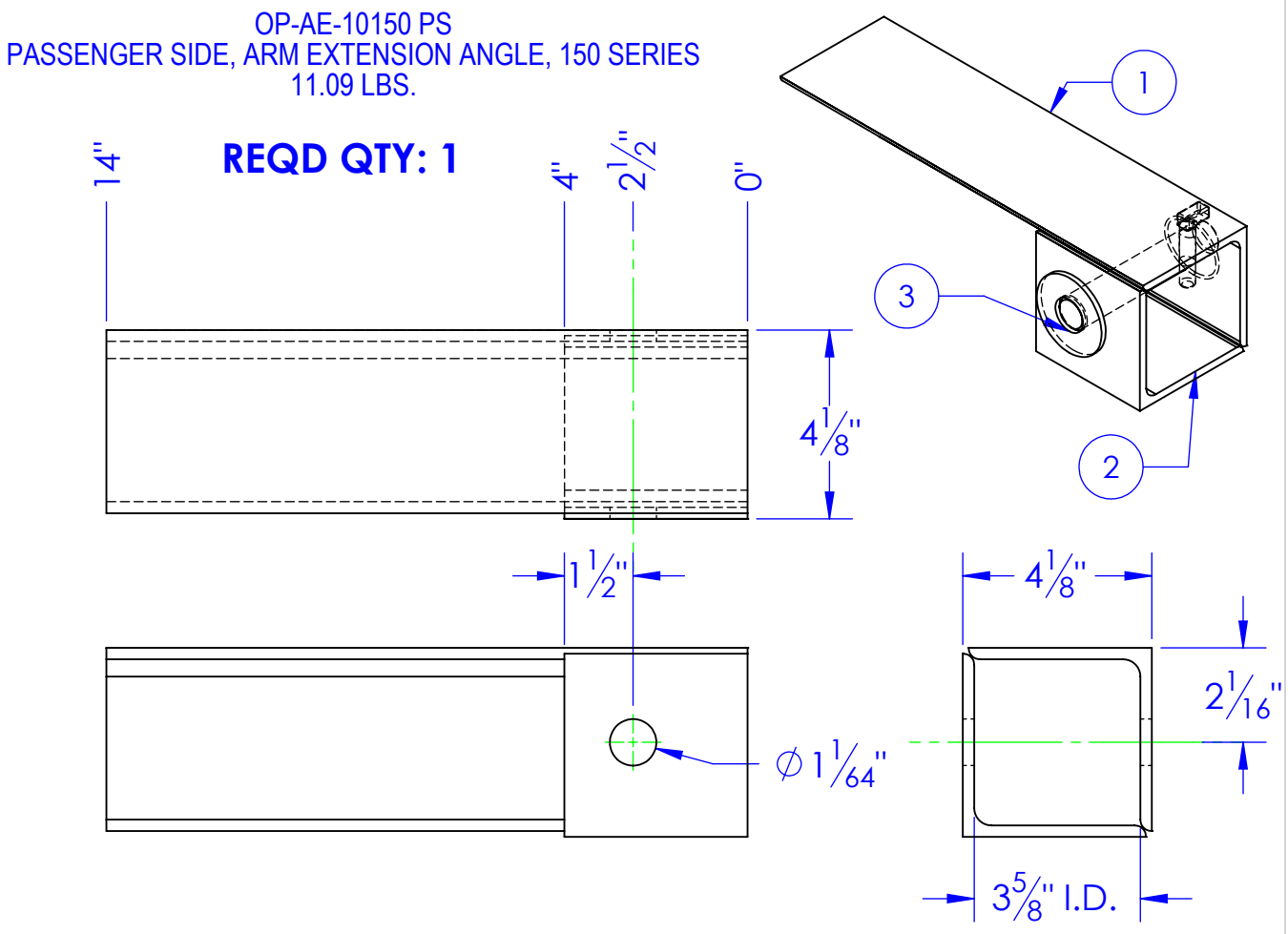


ITEM NO.	PART NUMBER	DESCRIPTION	Material	DRAWING #	QTY.
1	ST-AI 4x.25 L 14 DS	LENGTH: 14" DRIVER SIDE	ANGLE IRON 4 x1/4	90-1302	1
2	ST-AI 4x.25 L 4 DS	LENGTH: 4" DRIVER SIDE	ANGLE IRON 4 x1/4	90-1302	1
3	RE-PN-C1x525	PIN, CON, 5-1/4"		10-1707	1



ITEM NO.	PART NUMBER	DESCRIPTION	MATERIAL	DRAWING #	QTY.
1	ST-AI 4x.25 L 14 PS	LENGTH: 14" PASSENGER SIDE	ANGLE IRON 4 x1/4	90-1302	1
2	ST-AI 4x.25 L 4 PS	LENGTH: 4" PASSENGER SIDE	ANGLE IRON 4 x1/4	90-1302	1
3	RE-PN-C1x525	PIN, CON, 5-1/4"		10-1707	1



REV.	DESCRIPTION	DATE	APPROVED
B	UPDATED TO MATCH 3D MODEL	12/20/2012	

**PROPRIETARY AND CONFIDENTIAL**  
THE INFORMATION CONTAINED IN THIS DRAWING IS THE SOLE PROPERTY OF <INSERT COMPANY NAME HERE>. ANY REPRODUCTION IN PART OR AS A WHOLE WITHOUT THE WRITTEN PERMISSION OF <INSERT COMPANY NAME HERE> IS PROHIBITED.

UNLESS OTHERWISE SPECIFIED:  
DIMENSIONS ARE IN INCHES  
TOLERANCES:  
FRACTIONAL  $\pm 1/16$   
ANGULAR: MACH  $\pm 1$  BEND  $\pm$   
TWO PLACE DECIMAL  $\pm 0.10$   
THREE PLACE DECIMAL  $\pm 0.005$   
MATERIAL  
DO NOT SCALE DRAWING

DRAWN	NAME	DATE	P.O. BOX 248, SABETHA KS. 66534 (785) 284-3674 FAX (785) 284-3931		
PART #	HEATH	12/20/2012	<b>TRIPLE C</b> INC.		
ASM #	SEE DWG.				
COMMENTS: ARM EXTENSION, ANGLE, 150 SERIES			SIZE B	DWG. NO. 90-1302 B	REV B
			SCALE: 1:4	WEIGHT: 11.09	SHEET 1 OF 1